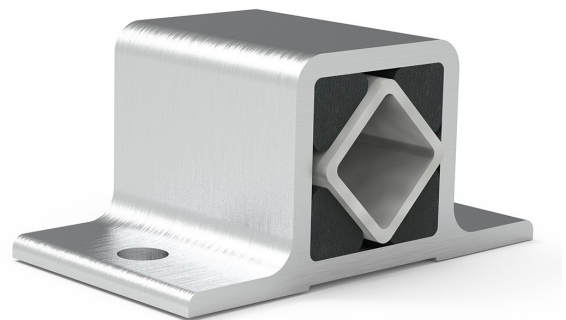


Product programme Rubber spring elements



ABSORBING

CUSHIONING

TENSIONING

OSCILLATING



Basic elements
Clamping technology
Swinging and damping

GENERAL | ADVANTAGES

Rubber spring elements and mechanical engineering components

The principle of the rubber spring element (Neidhardt principle) has been known since the 1940s and has proven itself as a polyvalent element in mechanical engineering. Due to the versatile capabilities of the rubber spring element, which can be used for bearing, springing, damping or oscillating, the possibilities are extremely diverse.

Industries

- Mining
- Food processing
- Construction machinery
- Amusement parks
- Wood processing
- Agriculture
- Transport
- Vehicle construction

Advantages at a glance

- Professional design for your application
- Durable and maintenance-free operation
- Large torsion angle +/-32°
- Flexible connection options
- Multiple functions (clamping, bearing, damping) possible
- Precise adjustability of the clamping force
- High-quality rubber compound
- Corrosion-resistant components

CUSHIONING - ABSORBING - TENSIONING - OSCILLATING



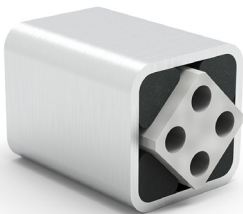
RUBBER SUSPENSION UNITS

The rubber spring element is a universal, elastic mounting for machine components and combines a torsion spring acting in two directions in one component. Mounting brackets (mounting brackets) are available for simple and secure fastening.

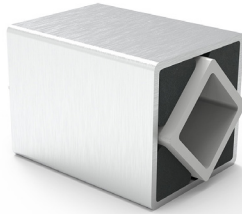
Industries and application examples

- Conveyor technology, elevators
- Road machines and municipal vehicles
- Crushing technology
- Chippers and crushers (mobile and stationary)
- Vibrating screens
- Mill construction
- Compressors and pumps
- Agricultural machinery
- Lift technology
- Passenger transport

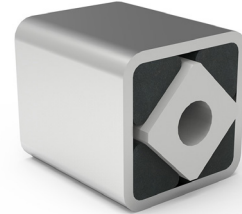
TYPE LTA



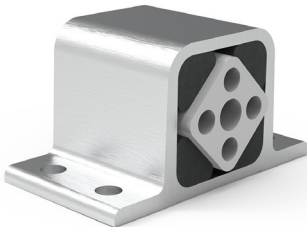
TYPE LTS



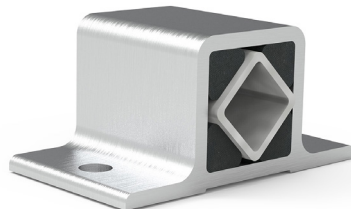
TYPE LTC



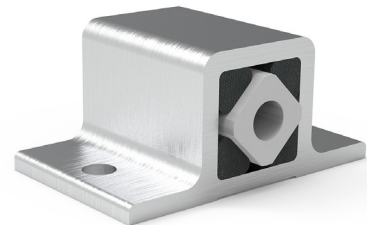
TYPE LTB-A



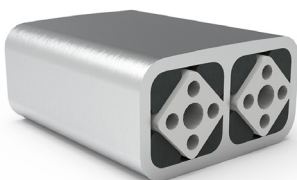
TYPE LTB-S



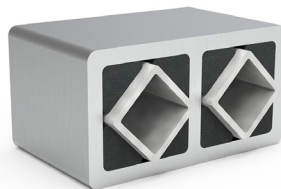
TYPE LTB-C



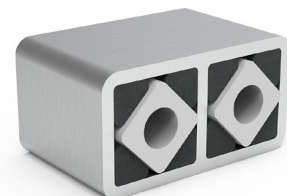
TYPE LTD-A



TYPE LTD-S



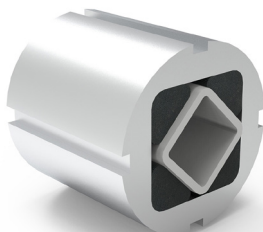
TYPE LTD-C



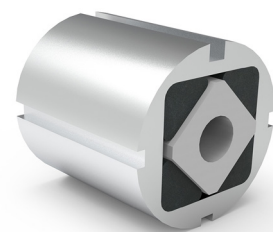
TYPE LTK-A



TYPE LTK-S



TYPE LTK-C



TENSIONER DEVICES AND ACCESSORIES

The tensioning element is a universal belt and chain tensioner and the cost-sensitive alternative to tension and compression springs.

Industries and application examples

- Conveyor technology, elevators
- Road machines and municipal vehicles
- Crushing technology
- Chippers and crushers (mobile and stationary)
- Vibrating screens, mixing technology
- Mill construction
- Compressors and pumps
- Agricultural machinery
- Lift technology
- Cable car construction and lift technology

TYPE TE



TYPE TE-I



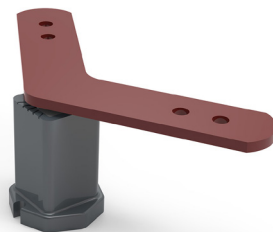
TYPE TE-G



TYPE TE-FB



TYPE TE-D BOOMERANG



ROLLER TYPE RE



CHAIN RIDER TYPE CR



TYPE CRS



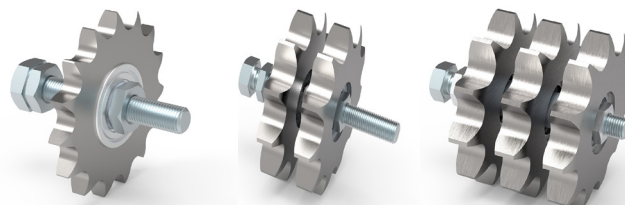
TYPE CRD



SPROCKET WHEEL TYPE K



TYPE KS SIMPLEX | DUPLEX | TRIPLEX



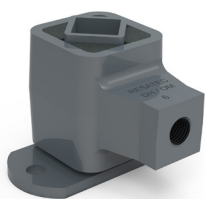
OSCILLATING UNITS

The oscillating units are elastic mountings for screening machines, vibrating conveyors, circular vibrating screens and plansifters. The single rockers are used, for example, for crankshaft-driven conveying/screening/sorting systems.

Application examples

- Sorting chute in piece goods processing
- Ore dewatering screens for stone and earth (mines)
- Screening machines Support for plansifters
- Vibratory conveyor transport with slider-crank drive
- Storage of conveyor troughs and sieve troughs

OSCILLATING MOUNTS TYPE OM DRIVE HEAD TYPE DH



DRIVE HEAD TYPE GSM



SCREEN MOUNT TYPE CH



SCREEN MOUNT TYPE CH-PL



SCREEN MOUNT TYPE CH-HL



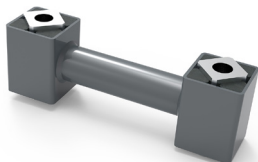
SCREEN MOUNT TYPE CS



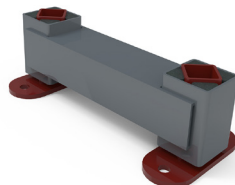
SCREEN MOUNT TYPE CE



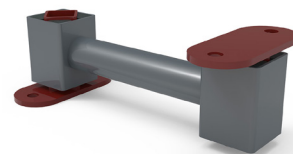
SINGLE ROCKER TYPE DB-C



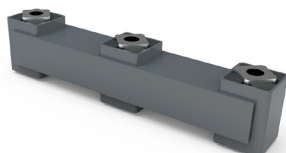
SINGLE ROCKER TYPE DB-F



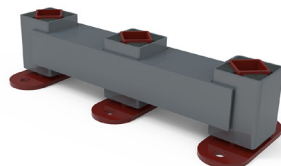
SINGLE ROCKER TYPE DB-FM



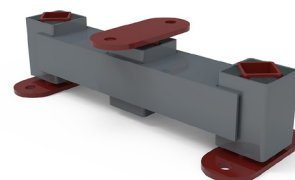
DOUBLE ROCKER TYPE TB-C



DOUBLE ROCKER TYPE TB-F



DOUBLE ROCKER TB-FM



VIBRATION ABSORBER | MOTOR BASES

Depending on the design, the vibration absorber offers the possibility of damping vibrations and shocks, isolating vibrations and providing excellent structure-borne sound insulation thanks to the rubber base.

Application examples

- Sorting chute in piece goods processing
- Ore dewatering screens for stone, earth (mines)
- Screening machines Support for plansifters
- Vibratory conveyor transport with slider-crank drive
- Storage of conveyor troughs and screening troughs

TYPE VD

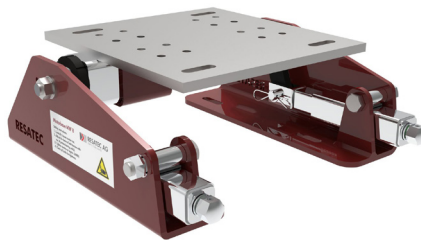


The motor base is designed for friction belt drives from 7.5 to 45 kW motors. It is infinitely adjustable and therefore guarantees optimum belt tension. It is equipped with two integrated axle supports, robust and maintenance-free pre-tensioning units and a screw head holder for simple and secure installation.

TYPE MW 8-270



TYPE MW 8-400/500

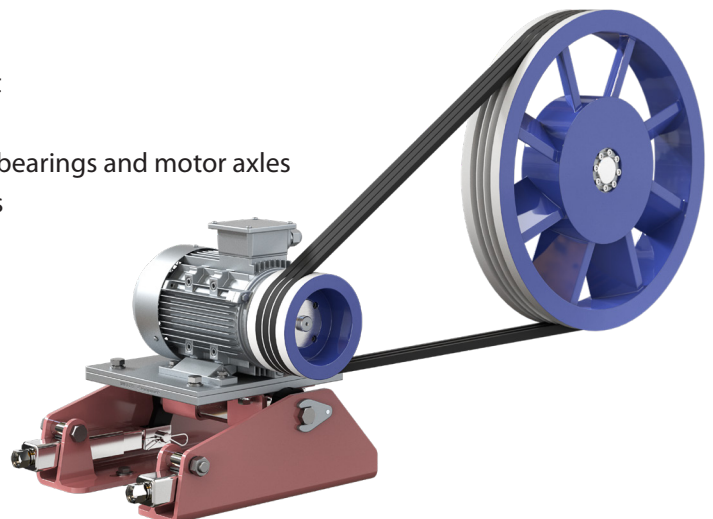


TYPE MW 10-450



Advantages at a glance

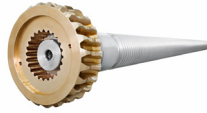
- The time required to change the V-belt is reduced by 50%.
- No need to realign the two drive pulleys during replacement
- Up to four times longer belt life due to correct tensioning
- Fewer operating interruptions and protection of the pulleys, bearings and motor axles
- Less energy consumption due to optimally tensioned V-belts
- Accident prevention through safe and easy handling
- All parts galvanised
- Absolutely maintenance-free



FLOHR - PRODUCTS OVERVIEW

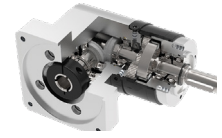
Gears

- Spiral toothed bevel gears
- Bevel gears
- Worm gears
- Spur gears
- Special gears



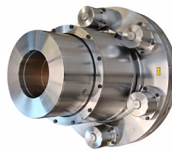
Gear Technology

- Bevel gearboxes
- Angle-planetary gearboxes
- Worm gearboxes
- Cam drives and indexing units
- Cam components
- Special gearboxes



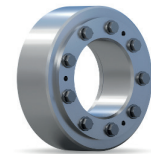
Couplings

- Rigid and flexible couplings
- Frictional connections
- Drum-coupling
- Gear-couplings
- Safety couplings



Friction connections

- Shrink discs
- Shaft couplings
- Flange couplings
- Locking units



Clamping technology

- Manual and pneumatic clamping solutions
- Power clamps
- Pivot units
- End effector solutions
- Linear units
- Grippers



Belt drives

- V-belt and flat belt pulleys
- Flywheels
- Special pulleys
- Motor mounting systems
- Drive belts
- Customer designed castings
- Accessories



Sensor systems

- Incremental encoders
- Magnetic encoders
- Absolute encoders
- Electronic overspeed switches
- Electronic position switches
- Universal encoder systems
- Systems



Contract manufacturing

- Turning, milling, grinding
- Grooving and broaching
- Balancing
- Calculation and design
- Assembly
- Service and repair




INDUSTRIE-TECHNIK GMBH

FLOHR Germany

FLOHR INDUSTRIE-TECHNIK GmbH
Im Unteren Tal 1
D-79761 Waldshut-Tiengen
Phone: +49 (0) 77 51 / 87 31 0
info@flohr-industrietechnik.de
www.flohr-industrietechnik.de

FLOHR Switzerland

FLOHR INDUSTRIE-TECHNIK GmbH
Zilistude 164
CH-5465 Mellikon
Phone: +41 (0) 56 / 267 08 10
info@flohr.ch
www.flohr.ch

FLOHR Austria

FLOHR INDUSTRIE-TECHNIK
Bucherstraße 37b
A-6922 Wolfurt
Phone: +43 (0) 5572 / 372 158
info@flohr.at
www.flohr.at